

# The Broomfield House Trustees and Friends of Broomfield Park



## Plans for the Restoration of Broomfield House and Stable Yard

9 March 2013



# Welcome to our stall

---

- **The Broomfield House Trust, a registered UK charity (no. 1083078)**
- **The Friends of Broomfield Park**
- **Working jointly with Enfield Council to restore Broomfield House and Stable Yard**
- **Our objectives today**
  1. **Current status of the House proposal**
    - **HLF Officers recommendation**
  2. **Outline plans for the Stable Yard proposal**
  3. **Highlight the value Broomfield Park adds to area regeneration**
  4. **Attract support and funding for the projects**

# So far....

---



- Council supports the Community's plan; housing plans set aside
- Built strong Community support
- Joint effort with the Council to produce an application for funding from the HLF



- Project cost £6.7M, required non-HLF funding of £1.7M
- Working group website <http://www.broomfieldhouse.org>
- Fund-raising site set up with BT My Donate:  
<https://mydonate.bt.com/charities/thebroomfieldhousetrust>

# Project Main Objectives

---

1. To restore Broomfield House in keeping with its heritage and re-open it to the public;
2. To restore the Stable Yard, creating artist studios, business incubators, an educational centre and a kitchen garden;
3. To improve the Park and restore the historic and rare Baroque water gardens;
4. To establish a café on the ground floor of the House, with an adjoining outdoor patio;
5. **To make Broomfield House a Grade II\* Green Restoration project (BREEAM**



# Community Engagement

---



To create a Heritage Learning Centre and Community Hub with a rolling programme of events and learning opportunities;

To develop and promote the House as a venue for family parties, wedding services, room hire and events;

To develop educational activities linked to the national curriculum with local schools;

To inform people about the House's unique heritage, the region and the environment by providing interpretive information

To engage actively with the local Community at all stages of the project; and

To provide volunteer / training and apprenticeship opportunities, e.g., in heritage.



# Project Income – House

- A café on the ground floor of the House providing a range of healthy, affordable food and drinks; possibly including a gift shop too. All profit to be rolled back into the House.
- Room hire by the community / businesses / families and / or individuals for meetings, parties, etc. at different price points
- Wedding ceremony venue, potential also for small receptions
- Events - examples include:
  - Family friendly: puppet shows, craft workshops, music and movement, children's films
  - Community: cultural events and exhibitions celebrating our diverse community
  - Adults: Small classical music shows, talks, learning workshops, fitness classes



# Project Income – Stable Yard

---



- Small business units for lease in the Stable Block with shared business resources and support
- Rental income from Professional Tenant in the Stable Block, e.g., voluntary sector organisation
- Education Grants: we intend to bid for funding to support education / creative projects targeted at young people who might otherwise not have access to such opportunities
- Lease of Artist Studios: (in the Stable Yard) to local designers and artists, periodically open to public for viewing
- Art Exhibitions: by local and visiting artists with sales commission fees accruing to the House

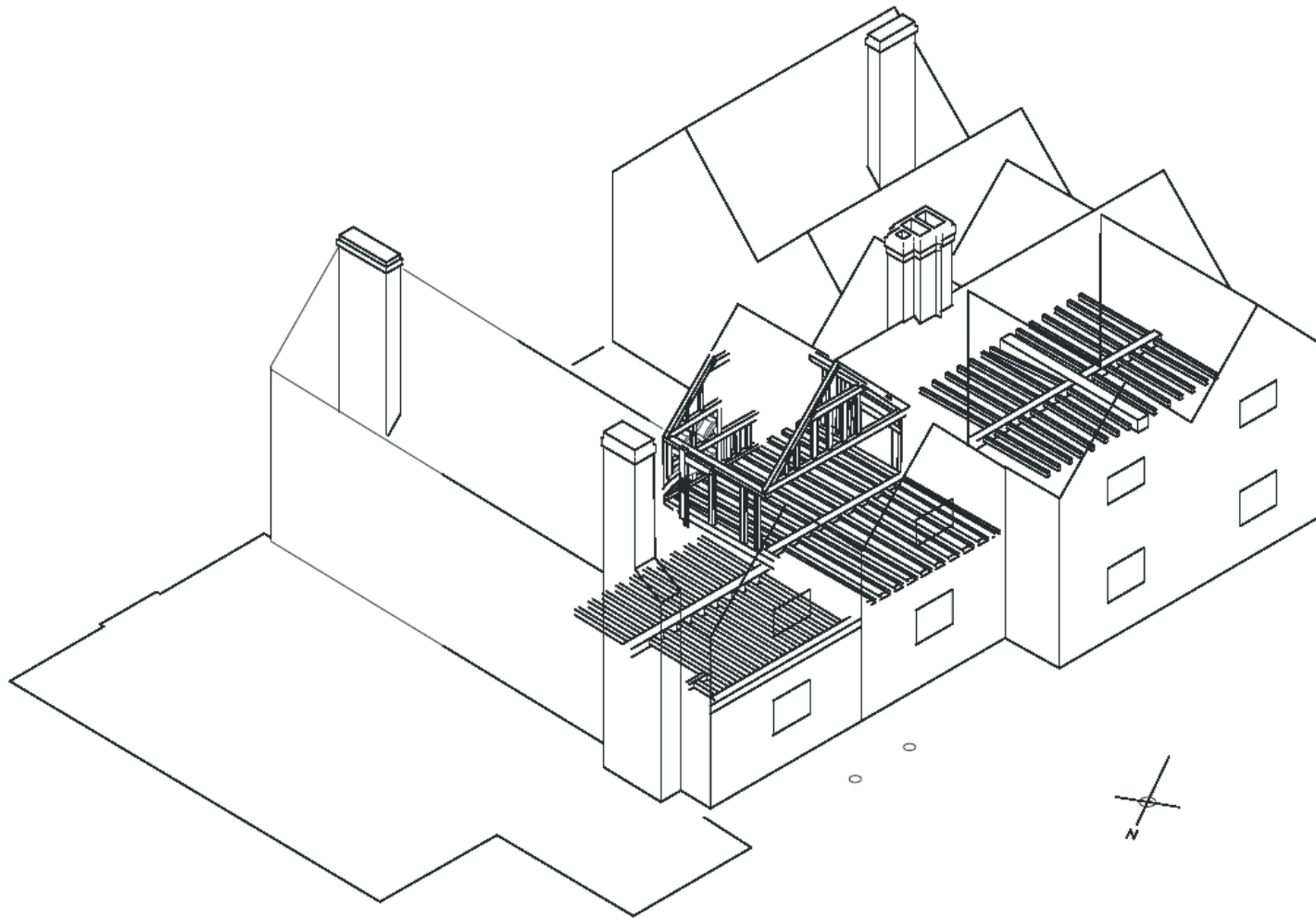
# Community Plans

---



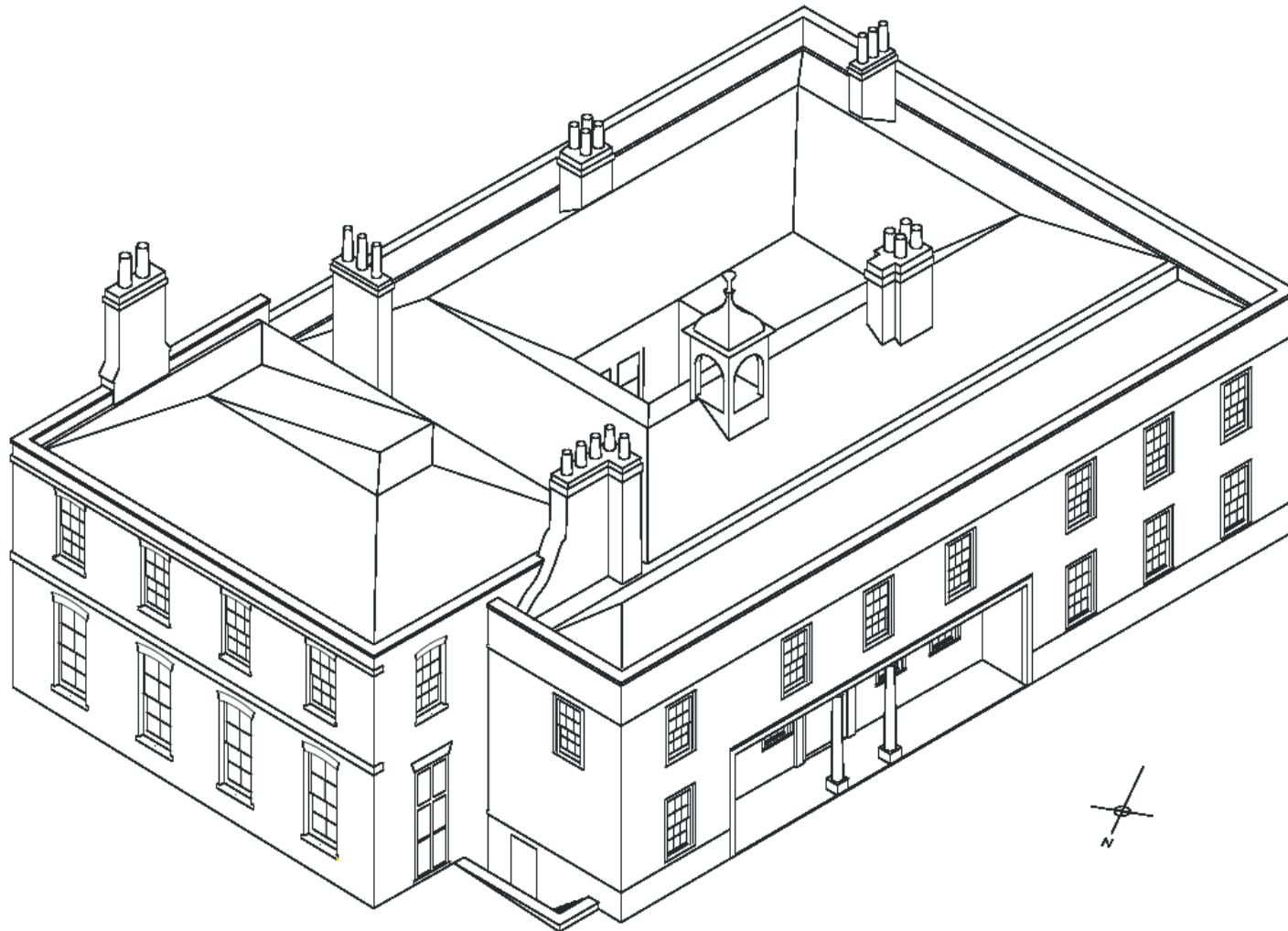
# Broomfield House c.1600

---

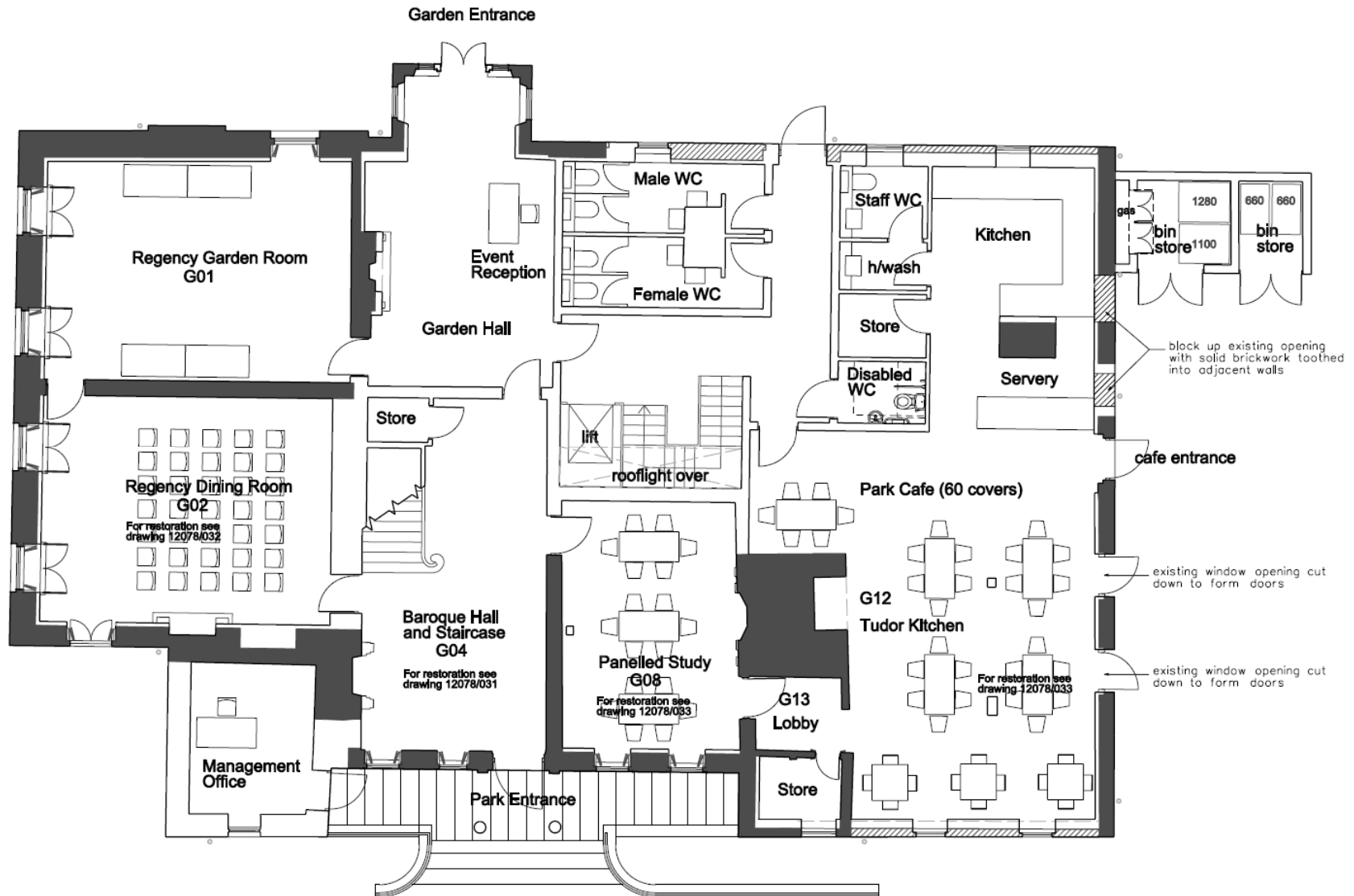


# Broomfield House c.1900

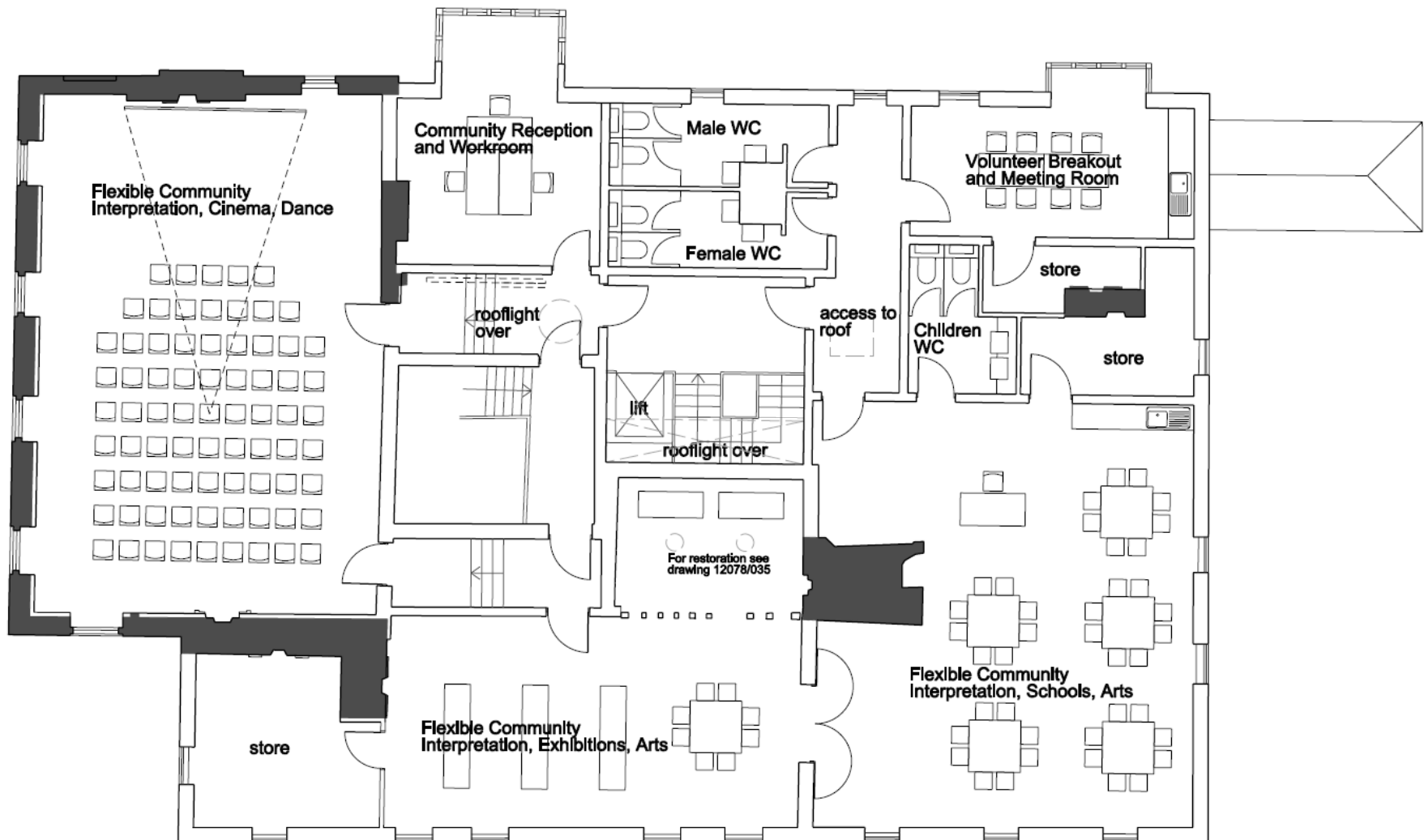
---



# 2012 Plans: Ground Floor



# 2012 Plans: First Floor

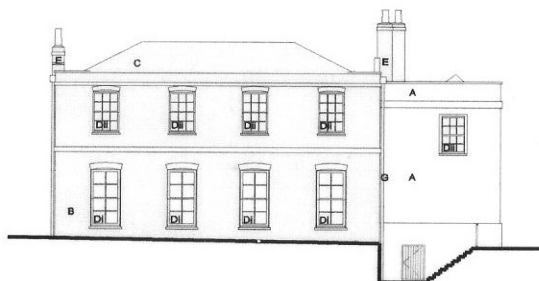




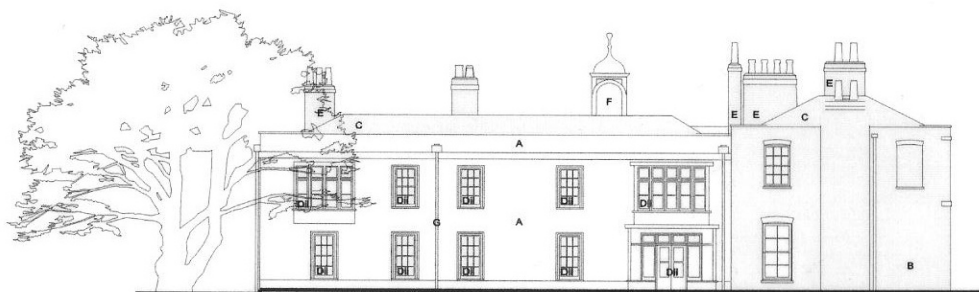
West Elevation



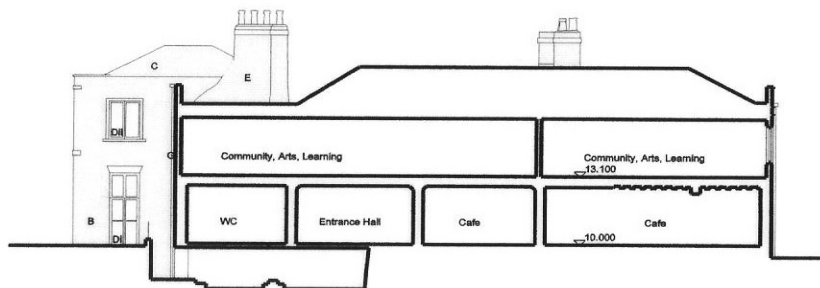
South Elevation



North Elevation



East Elevation



North South Section

# Similar Models



Clissold Park



Forty Hall



# Flexible Use Rooms

---

- Small cinema – art, foreign, oldies, kids...
- Classical music performances
- Dance floor – lessons
- Receptions / parties
- Puppet shows
- Educational lectures





# Community History

---

## Events

- History of the House and Park until 1903
- Purchase by Southgate Council 1903
- Urbanisation of surrounding area
- First and Second World War Events
- Post War changes
- New Communities

What about **us**? What's **next**?

# A Museum?

---

- Need to be able to hire out rooms
- Old cabinet displays no longer all appropriate
- Maximise use of modern and interactive displays
- Digitise Enfield's historic documents
- Oral histories to be collected
- Temporary displays including local objects
- "Newcomers" stories

# Stable Yard

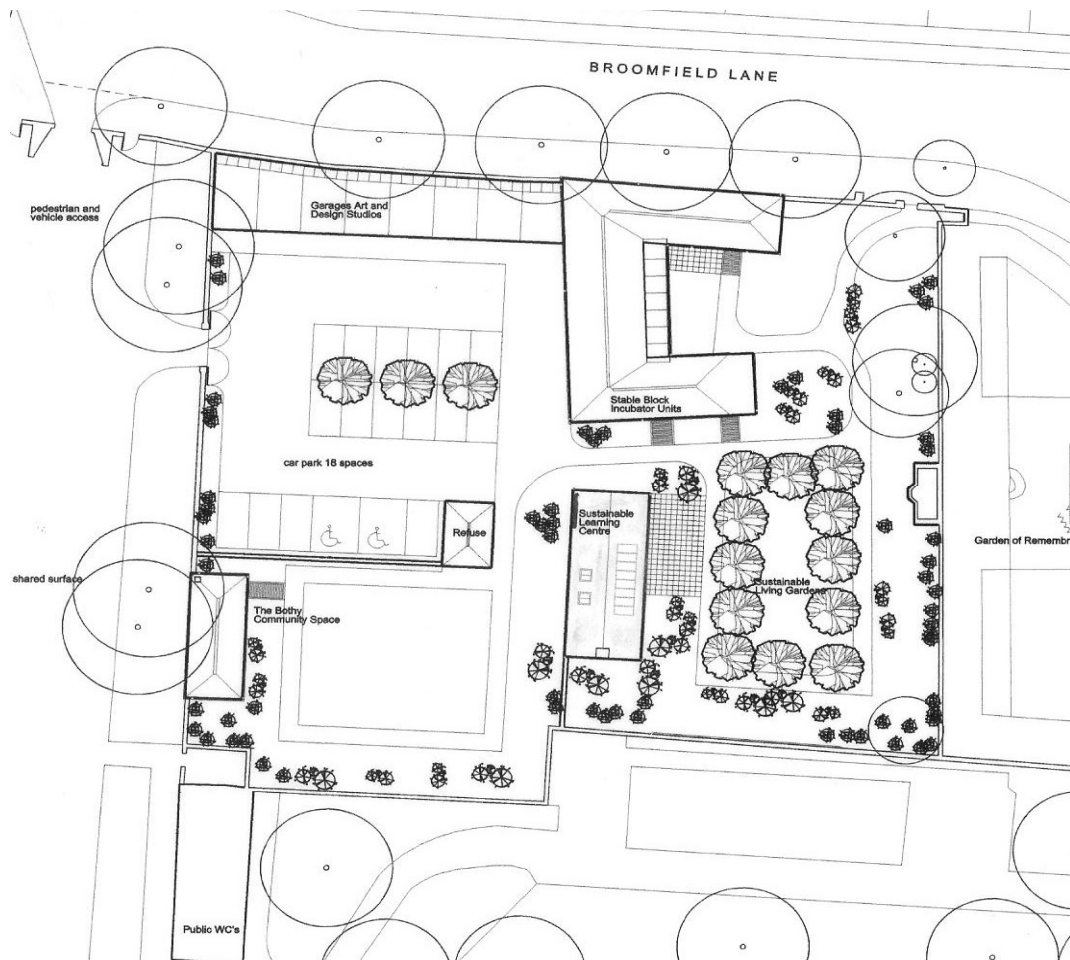
---



# Stable Yard

---





# A Creative community



- Designer makers / artists
- New business enterprises
- Rents
- Destination



# Growing Things

---



**Restoring the Hothouse**

**Imagine ...**



# Community Involvement

---



## Growing Food



## Harvest





# Eco and Alternative Technology

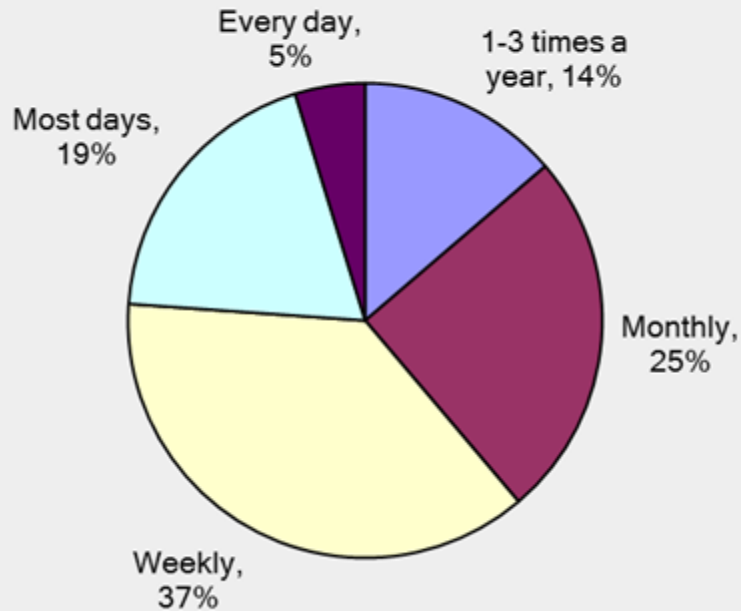
---

- Green Heritage Demonstration in SY
  - PV solar panels
  - Rainwater harvesting
  - Grey water recycling
  - Compost and the new hothouse
  - Education
  - Centre for Alternative Technology

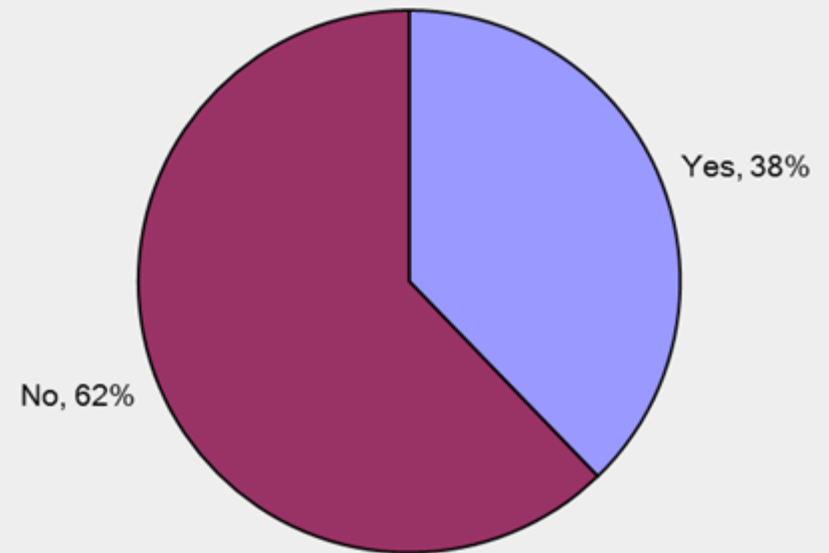
# Broomfield House Survey



How often do you visit Broomfield Park?

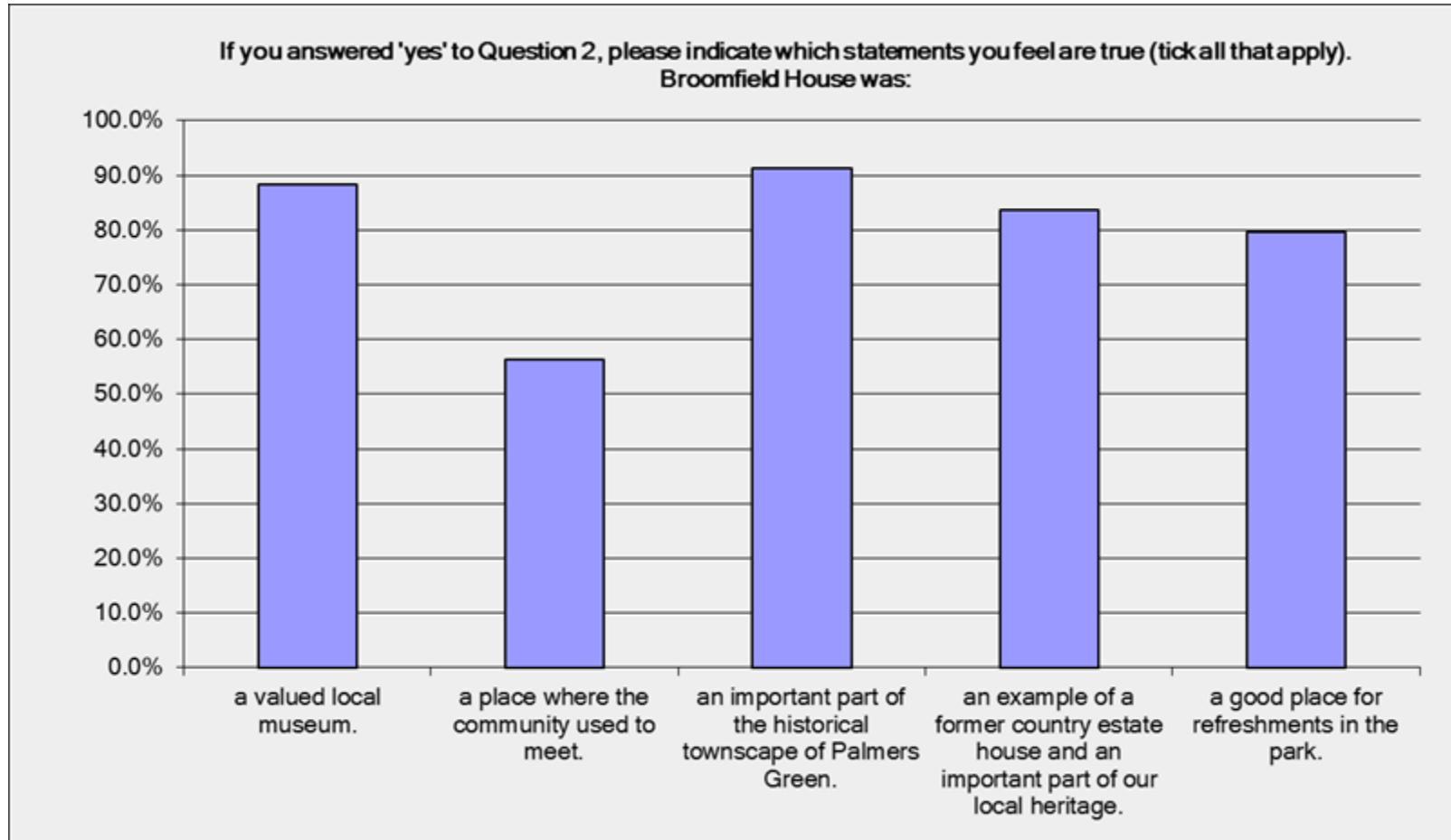


Did you ever visit Broomfield House when it was open?



n=335

# Broomfield House Survey

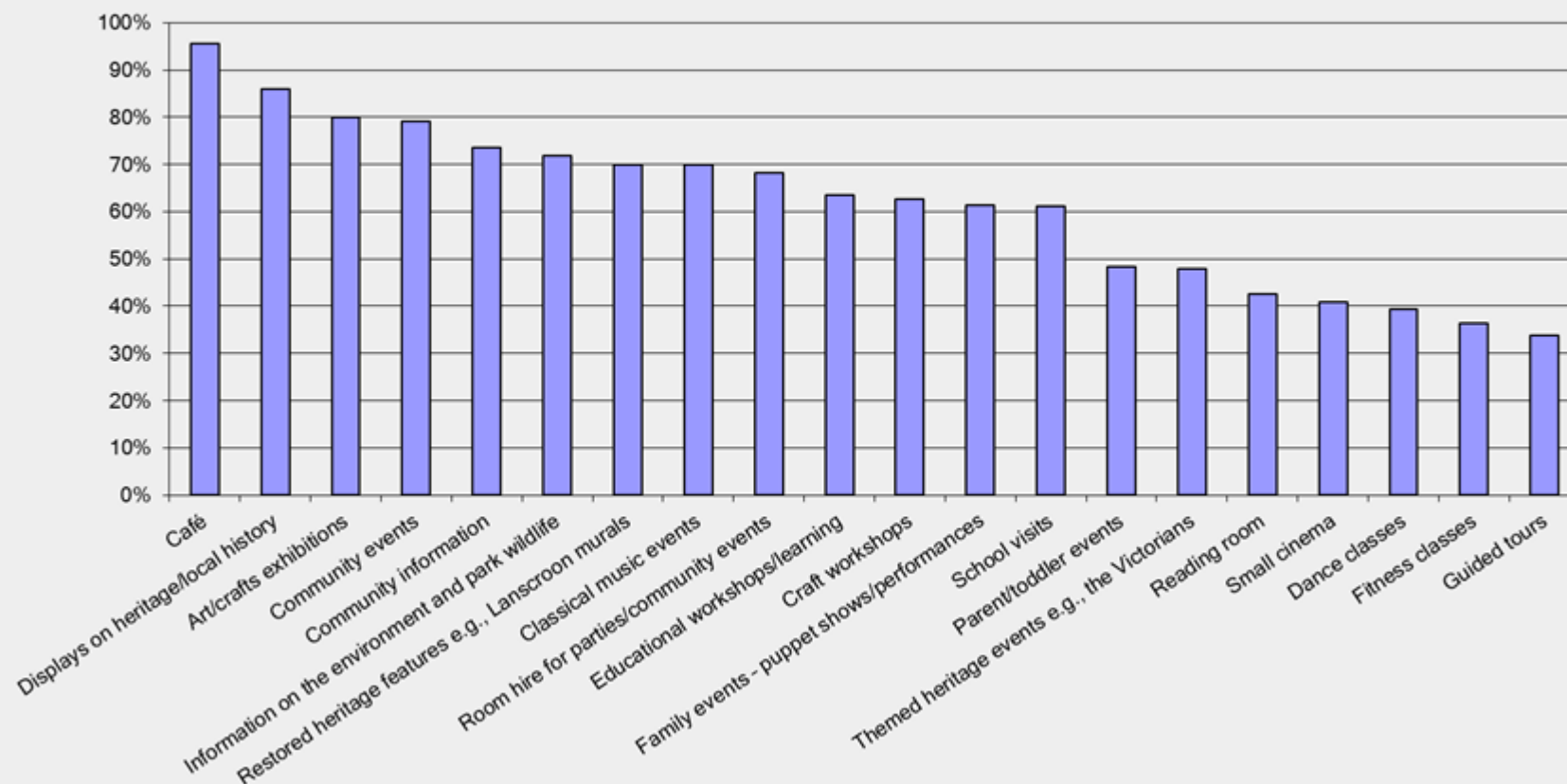


n=128

# Broomfield House Survey



Which of the following activities/events would you like to see in a restored Broomfield House? Please tick as many boxes as apply (and suggest your own).



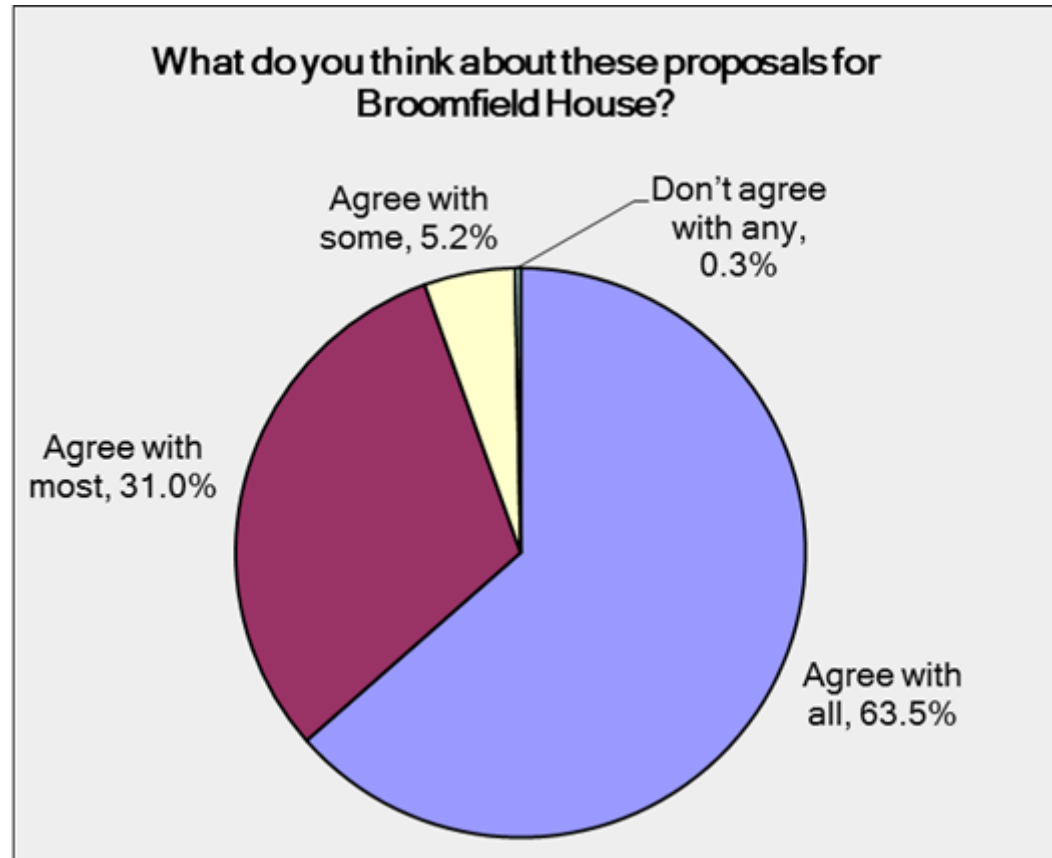
# Some of the “Other” ideas...

---



- Rehearsal space for groups of any kind.
- Displays of photos/old postcards of Palmers Green and Broomfield House and Park.
- Therapy rooms for hire.
- Other types of music as well as classical.
- Open air theatre in the summer.
- I would like occasional 'quiet' sessions i.e., a time to visit when only adults and no events are on.
- Open air music events e.g., like at Kenwood / outdoor café / All community events!
- Period gardens linked to Capel Manor. Centre for events like All trail?

# Broomfield House Survey



n=329



# Broomfield House Survey

Male	37%
Female	63%

Under 18	1%
18-24	1%
25-34	7%
35-44	27%
45-54	23%
55-60	11%
61-64	10%
65 +	18%
Prefer not	2%

Work full-time	37%
Employed part-time	16%
Self-Employed	17%
Unemployed, available to work	1%
Student	1%
On a training programme	0%
Permanently sick/disabled	0%
Partially retired	7%
Fully retired	21%

Asian	1%
British	70%
Chinese	0%
Greek	1%
Greek Cypriot	3%
Indian	1%
Irish	3%
Pakistani	0%
Polish	1%
Turkish	0%
Turkish Cypriot	1%
White & Black African	0%
White & Black Caribbean	2%
Other	11%
prefer not to say	7%

# Café Survey

---

- Sarah Cotton (Greenery Café) conducted a survey, 270 responses
- Priorities in descending order:
  1. Affordable - 192 votes (70%)
  2. Good place to meet - 147 votes (53%)
  3. Healthy food - 134 votes (49%)
  4. Child friendly - 128 votes (47%)





# Café Concept

---

- Not intending to franchise like Clissold House or Forty Hall, we want profits from café ploughed back into House and programmes
- Menu of affordable, healthy, family-oriented food options
- Locally sourced food as much as possible, aligned with LBE's Food Strategy<sup>1</sup>
- Inside and outside seating, ~60 covers inside, two rooms:
  - one loosely designated family-friendly and
  - one as a quieter area
- Dining area will be attractive and historic, in keeping with the heritage; picture rails, fireplace and framed pictures.
- Crayons and games for children's use, and potentially a miniature Broomfield House on the back patio / other modest safe-play options.

<sup>1</sup>LBE's strategy: 'aims to increase the production and consumption of healthy, sustainable food in Enfield.'

# Café Concept

---

Cllr. Del Goddard said:

“We want to encourage residents to eat good, wholesome food because there is plenty of evidence that links a proper diet to better health, longer life and improved performance in school.”

We agree!



# Back to the Future

---



Letters of Support • Volunteers • Email list to stay informed  
Questions?